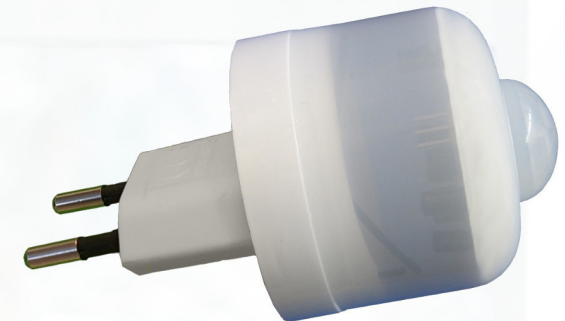


Nr.: 3.006.19111.63.0001

digitalSTROM IC Stecker-PIR Sensor T11



Integrierte digitalSTROM Technik
erkennt sicher jede Bewegung

ohne
"Klick-Klack"
Geräusche



Artikel Nr.: 3006.1911.63.0001

GTIN: 4260385586308

IC Industrielle
Computertechnik GmbH

Konkordiastr. 11
D-40219 Düsseldorf
Telefon: +49 211 9011680
Telefax: +49 211 396569

www.lsenbuegel.net

info@lsenbuegel.net



Wir sind ein E-Marken Betrieb.



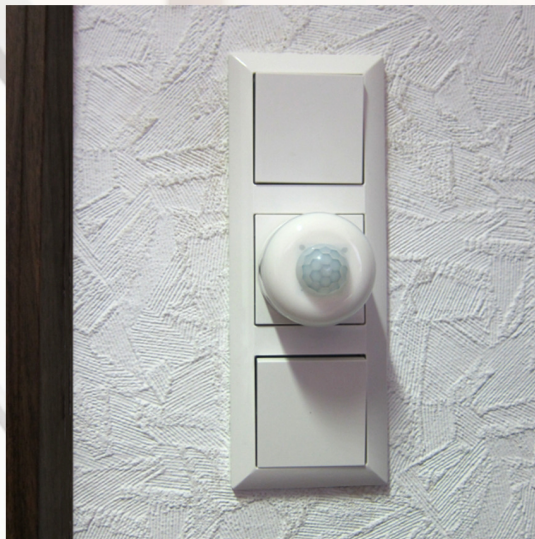
LED
(Zustands Anzeige)



Short description:

The IC connector-PIR sensor transmits motion messages directly into your digitalSTROM system. With the T11 connector, it has been designed for the Swiss market. This allows individual security functions to be triggered, or the movement via the APP Scene Responder can lead to further links. The IC connector-PIR sensor is a "plug and play" product and consists of only one unit. By the "plug and play" possibility, you can insert your IC connector-PIR sensor at any time in another room. In the case of several days absence, you can easily secure your rooms at the back of the garden. A movement would send a push-up notification to your mobile device.

Another area of application would be the bedroom. If an elderly person wants to be so in their bathroom at night, luminaires can be switched on automatically for a certain time on the way there. The IC connector-PIR sensor under the bed would detect the standing up of the person from the bed. Due to the simple handling of the sensor, further applications are possible in a short time.

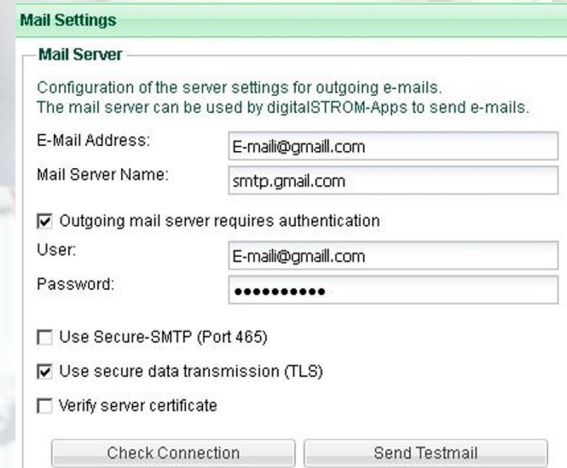
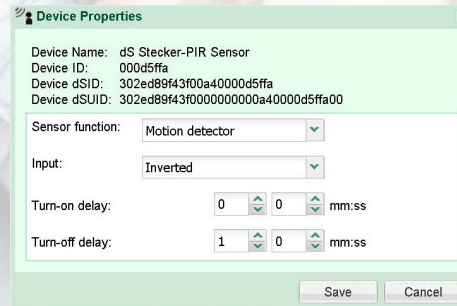


IC connector-PIR sensor plugged into socket.

The detection range of the sensor is 140 degrees. The range is approx. 3.5 meters (direct approach). The use of state-of-the-art semiconductor technology guarantees a silent switching process (no click-clack). The integrated digitalSTROM technology corresponds to the SW-AKM210. The dS signal state is visible on the dS connector-PIR sensor by means of the lightly transparent cap via an LED.

Operating modes:

The operating mode can be changed using the digitalSTROM configurator. Up to 10 events per 5 minutes are sent per line. It is possible to send a push-up message or an e-mail from the dS server when triggering a movement alarm.



DigitalSTROM® is a registered trademark of Digitalstrom AG

Setting in Configurator

digitalSTROM Configurator

Apps Activities Rooms Groups System **Hardware** Help

Meters

St...	Name	dSM ID	Number of Devices
●	K11	00004da2	23

Devices

Name	ID	Input Mode	Input	Status
dS Stecker-PIR Sensor	000d5ffa	Motion detector	Line 1, Inverted	No movement
free, not connected	000d5ffb	App Mode	Line 2, standard	Contact open

Registration to the digitalSTROM system:

The LED flashes quickly when you log on to a digitalSTROM system. The status LED takes the device group color of the last actuated input. After 30 seconds without actuation the LED automatically falls back to the color of the first input.

Technical specifications:

Nominal input voltage / frequency... 230 V AC / 50 Hz
Power consumption approx. 0.6 W
Dimensions (total) L 91 x d 53mm
Dimensions (After installation) L 54 x d 53mm
Protection class Protection class II
Protection class (dry rooms) IP41 EN 60529
Permissible ambient temp. (Operation)
..... +5 °C ... +40 °C

Permissible ambient humidity (operation)
<60% RH non-condensing

Data transmission via 230 V AC network
DigitalSTROM protocol V1.0

Connector T11

RoHS

